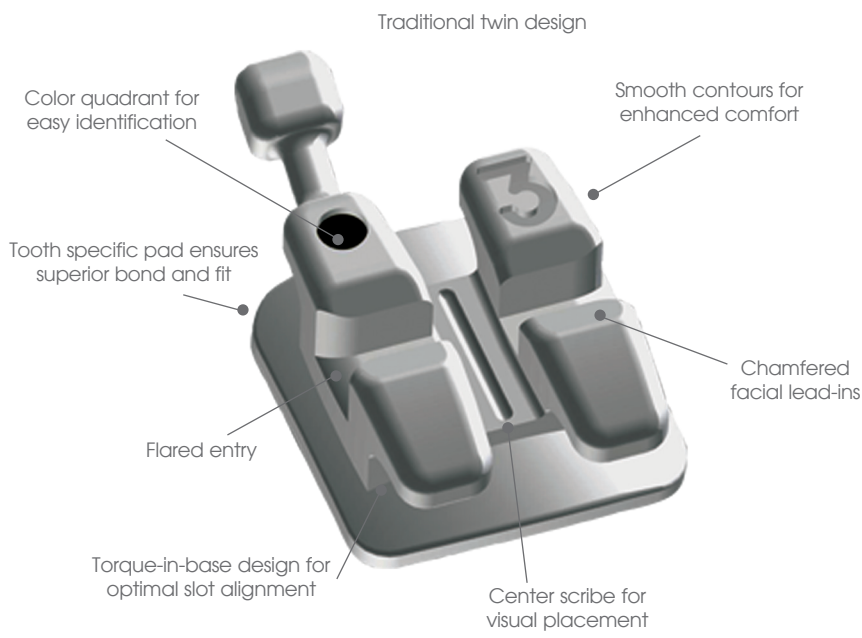


FLI® Twin

RMO®'s FLI Twin Brackets offer unwavering high quality in a true conventional bracket design. Smooth, rounded contours assure both gentle aesthetics and enhanced patient comfort. The FLI Twin bracket system features a color quadrant

identification system and tooth specific pads to improve bonding efficiency. New chamfered facial lead-ins and a flared entry support quick and easy wire changes.



*FLI® Twin: U.S. Design Patent No. D660,968



Maxillary brackets

	Angulation	Torque	Width	Right/Left	.018 Arch Slot		.022 Arch Slot	
					On Bases	Bracket Only/ On Bands	On Bases	Bracket Only/ On Bands
Central								
	5°	12°	3.6mm	R	M05300		M05400	
				L	M05301		M05401	
Lateral								
	9°	8°	2.9mm	R	M05302		M05402	
				L	M05303		M05403	
Cuspid								
	11°	0°	2.9mm	R	M05304		M05404	
				L	M05305		M05405	
	Without hook	0°	2.9mm	R	M05306		M05406	
				L	M05307		M05407	
First/Second Bicuspid								
	0°	-7°	2.9mm	R/L	M05308		M05408	
				Without hook				
	Without hook	-7°	2.9mm	R	M05310		M05410	
				L	M05311		M05411	
	Without hook	-7°	2.9mm	R/L	M05350		M05450	
				Gingivally Offset without hook				
	Without hook	-7°	2.9mm	R	M05352		M05452	
				L	M05353		M05453	
	With hook	-7°	2.9mm	R	M05352		M05452	
				L	M05353		M05453	

Markings - Right: Black, Left: Green

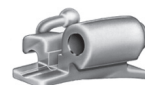
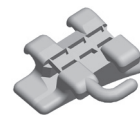
bracket&tubesystems

FLI® TWIN DESIGN RMO® VERSION OF
ROTH PREADJUSTED STRAIGHT WIRE SYSTEM



Maxillary tubes

Angulation	Torque	Distal Offset	Width	Headgear	Right/Left	.018 Arch Slot		.022 Arch Slot	
						On Bases	Tube Only/ On Bands	On Bases	Tube Only/ On Bands
First Molar									
Single convertible with hook									
0°	-10°	15°	3.8mm		R	A08634	A05664	A08636	A05692
Torque in base.					L	A08635	A05665	A08637	A05693
First Molar									
Double convertible with hook									
0°	-14°	14°	3.8mm	.045 gingival	R	A08600	A05650	A08620	A05670
Torque in base.					L	A08601	A05651	A08621	A05671
First Molar									
Double convertible with ball hook									
0°	-14°	14°	4.2mm	.045 occlusal	R	A08602	A05652	A08622	A05672
Torque in base.					L	A08603	A05653	A08623	A05673
First Molar									
Double convertible with hook									
0°	-14°	14°	3.8mm		R	A08684	A05684	A08686	A05686
					L	A08685	A05685	A08687	A05687
Double with hook without cap									
0°	-14°	14°	3.8mm		R	A08688	A05688	A08690	A05690
Torque in base.					L	A08689	A05689	A08691	A05691
First Molar									
Triple convertible with hook									
0°	-14°	14°	3.8mm	.045 occlusal	R	A08604	A05654	A08624	A05674
Torque in base.					L	A08605	A05655	A08625	A05675
Second Molar									
Single with hook									
0°	-14°	14°	3.3mm		R	A08606	A05656	A08626	A05676
					L	A08607	A05657	A08627	A05677



bracket&tubesystems

FLI® TWIN DESIGN RMO® VERSION OF
ROTH PREADJUSTED STRAIGHT WIRE SYSTEM



Mandibular brackets

	Angulation	Torque	Width	Right/Left	.018 Arch Slot		.022 Arch Slot	
					On Bases	Bracket Only/ On Bands	On Bases	Bracket Only/ On Bands
	Central/Lateral							
	2°	-1°	2.4mm	R	M05320		M05420	
				L	M05321		M05421	
	Cuspid							
	5°	-11°	2.9mm					
	Without hook				R	M05324		M05424
					L	M05325		M05425
With hook				R	M05326		M05426	
				L	M05327		M05427	
	First Bicuspid							
	0°	-17°	2.9mm					
	Without hook				R	M05328		M05428
					L	M05329		M05429
	With hook				R	M05330		M05430
					L	M05331		M05431
	Gingivally Offset without hook				R	M05360		M05460
					L	M05361		M05461
	Gingivally Offset with hook				R	M05362		M05462
					L	M05363		M05463
	Second Bicuspid							
	0°	-22°	2.9mm					
	Without hook				R	M05332		M05432
					L	M05333		M05433
	With hook				R	M05334		M05434
					L	M05335		M05435
	Gingivally Offset without hook				R	M05364		M05464
					L	M05365		M05465
	Gingivally Offset with hook				R	M05366		M05466
					L	M05367		M05467

Markings - Right: Red, Left: Yellow

bracket&tubesystems

FLI® TWIN DESIGN RMO® VERSION OF ROTH PREADJUSTED STRAIGHT WIRE SYSTEM



Mandibular tubes

Angulation	Torque	Distal Offset	Width	Lip Bumper	Right/Left	.018 Arch Slot		.022 Arch Slot	
						On Bases	Tubes Only/ On Bands	On Bases	Tubes Only/ On Bands
First Molar									
Single convertible with hook									
-1°	-30°	0°	3.8mm		R	A08638	A05666	A08640	A05694
Not preangulated. Torque in base.					L	A08639	A05667	A08641	A05695
First Molar									
Double convertible with hook									
-1°	-30°	4°	3.8mm		R	A08608	A05658	A08628	A05678
Not preangulated. Torque in base.					L	A08609	A05659	A08629	A05679
First Molar									
Triple with hook									
-1°	-30°	4°	3.8mm	.045 occlusal	R	A08610	A05660	A08630	A05680
Not preangulated. Torque in base.					L	A08611	A05661	A08631	A05681
Second Molar									
Single with hook									
-1°	-30°	4°	3.3mm		R	A08612	A05662	A08632	A05682
Not preangulated.					L	A08613	A05663	A08633	A05683



KITS

Single Case, 20 Brackets

KM05300	Roth FLI®Twin .018 without hook, 5-5
KM05400	Roth FLI®Twin .022 without hook, 5-5
KM05301	Roth FLI®Twin .018 hook on cuspid, 5-5
KM05401	Roth FLI®Twin .022 hook on cuspid, 5-5
KM05302	Roth FLI®Twin .018 hook on cuspid/bicuspid, 5-5
KM05402	Roth FLI®Twin .022 hook on cuspid/bicuspid, 5-5
KM05305	Roth FLI®Twin .018 hook on cuspid and gingivally offset bicuspid, 5-5
KM05405	Roth FLI®Twin .022 hook on cuspid and gingivally offset bicuspid, 5-5



Maxillary brackets

	Angulation	Torque	Width	Right/Left	.018 Arch Slot		.022 Arch Slot	
					On Bases	Bracket Only/ On Bands	On Bases	Bracket Only/ On Bands
	Central							
	4°	17°	3.6mm	R	M05000		M05100	
				L	M05001		M05101	
	Lateral							
	8°	10°	2.9mm					
	Without hook			R	M05002		M05102	
				L	M05003		M05103	
	Cuspid							
	8°	-7°	2.9mm					
	Without hook			R	M05004		M05104	
				L	M05005		M05105	
	With hook			R	M05006		M05106	
				L	M05007		M05107	
	First/Second Bicuspid							
	0°	-7°	2.9mm					
	Without hook			R/L	M05008		M05108	
	With hook			R	M05010		M05110	
				L	M05011		M05111	
	Gingivally Offset without hook			R/L	M05050		M05150	
	Gingivally Offset with hook			R	M05052		M05152	
				L	M05053		M05153	

Markings - Right: Black, Left: Green

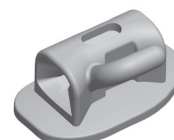
bracket&tubesystems

FLI® TWIN DESIGN RMO® VERSION OF MBT



Maxillary tubes

Angulation	Torque	Distal Offset	Width	Headgear	Right/Left	.018 Arch Slot		.022 Arch Slot	
						On Bases	Tube Only/ On Bands	On Bases	Tube Only/ On Bands
First Molar									
Single with Hook									
0°	-14°	10°	4.6mm		R	A08562	A05422	A08566	A05522
					L	A08563	A05423	A08567	A05523
Second Molar									
Single with Hook									
0°	-14°	10°	3.6mm		R	A08564	A05424	A08568	A05524
					L	A08565	A05425	A08569	A05525





Mandibular brackets

	Angulation	Torque	Width	Right/Left	.018 Arch Slot		.022 Arch Slot	
					On Bases	Bracket Only/ On Bands	On Bases	Bracket Only/ On Bands
	Central/Lateral							
	0°	-6°	2.4mm	R/L	M05020		M05120	
	Cuspid							
	3°	-6°	2.9mm					
	Without hook			R	M05024		M05124	
				L	M05025		M05125	
	With hook			R	M05026		M05126	
				L	M05027		M05127	
	First Bicuspid							
	2°	-12°	2.9mm					
	Without hook			R	M05028		M05128	
				L	M05029		M05129	
	With hook			R	M05030		M05130	
				L	M05031		M05131	
	Gingivally Offset without hook							
				R	M05060		M05160	
				L	M05061		M05161	
	Gingivally Offset with hook							
				R	M05062		M05162	
				L	M05063		M05163	
	Second Bicuspid							
	2°	-17°	2.9mm					
	Without hook			R	M05032		M05132	
				L	M05033		M05133	
	With hook			R	M05034		M05134	
				L	M05035		M05135	
	Gingivally Offset without hook							
				R	M05064		M05164	
				L	M05065		M05165	
	Gingivally Offset with hook							
				R	M05066		M05166	
				L	M05067		M05167	

Markings - Right: Red, Left: Yellow

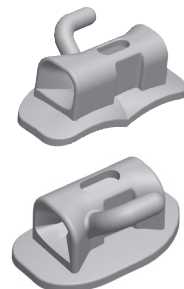
bracket&tubesystems

FLI® TWIN DESIGN RMO® VERSION OF MBT



Mandibular tubes

Angulation	Torque	Distal Offset	Width	Headgear	Right/Left	.018 Arch Slot		.022 Arch Slot		
						On Bases	Tube Only/ On Bands	On Bases	Tube Only/ On Bands	
First Molar										
Single with Hook										
0°	-20°	0°	4.6mm		R	A08572	A05426	A08576	A05526	
					L	A08573	A05427	A08577	A05527	
Second Molar										
Single with Hook										
0°	-10°	0°	3.6mm		R	A08574	A05428	A08578	A05528	
					L	A08575	A05429	A08579	A05529	



KITS

Single Case, 20 Brackets

KM05000	MBT FLI®Twin .018 without hook, 5-5
KM05100	MBT FLI®Twin .022 without hook, 5-5
KM05001	MBT FLI®Twin .018 hook on cuspid, 5-5
KM05101	MBT FLI®Twin .022 hook on cuspid, 5-5
KM05002	MBT FLI®Twin .018 hook on cuspid/bicuspid, 5-5
KM05102	MBT FLI®Twin .022 hook on cuspid/bicuspid, 5-5
KM05005	MBT FLI®Twin .018 hook on cuspid and gingivally offset bicuspids, 5-5
KM05105	MBT FLI®Twin .022 hook on cuspid and gingivally offset bicuspids, 5-5







bracket & tube systems

FLI® TWIN DESIGN

RICKETTS® ORIGINAL BIOPROGRESSIVE® SYSTEM



Maxillary brackets

						.018 Arch Slot	
	Angulation	Torque	Width	Right/Left			
	Central						
	0°	22°	3.6mm	R L	M05200 M05201		
	Lateral						
	8°	14°	2.9mm	R L	M05202 M05203		
	Cuspid						
	5°	7°	2.9mm				
	Without hook			R L	M05204 M05205		
	With hook			R L	M05206 M05207		
	First/Second Bicuspid						
	0°	0°	2.9mm				
	Without hook			R/L	M05208		
	With hook			R L	M05210 M05211		
	Gingivally Offset without hook			R/L	M05250		
	Gingivally Offset with hook			R L	M05252 M05253		

Markings - Right: Black, Left: Green

Maxillary tubes*

								.018 Arch Slot	
	Angulation	Torque	Distal Offset	Width	Headgear	Right/Left	On Bases	Tubes Only/ On Bands	
	First Molar								
	Triple convertible with hook								
	0°	0°	15°	3.8mm	.045 gingival	R L	A08360 A08361	A04960 A04961	
	Second Molar								
	Single with hook								
	0°	0°	12°	3.3mm		R L	A08382 A08383	A04982 A04983	

*For more optional Biopgressive® tubes, please refer to the Biopgressive tubes catalog section.



bracket & tube systems

FLI® TWIN DESIGN
RICKETTS® ORIGINAL BIOPROGRESSIVE® SYSTEM

Mandibular brackets

.018 Arch Slot

Angulation	Torque	Width	Right/Left	
Central/Lateral				
0°	0°	2.4mm	R/L	M05220
Cuspid				
5°	7°	2.9mm		
Without hook			R	M05224
			L	M05225
With hook			R	M05226
			L	M05227
First/Second Bicuspid				
0°	0°	2.9mm		
Without hook			R/L	M05208
With hook			R	M05211
			L	M05210
Gingivally Offset without hook			R/L	M05250
Gingivally Offset with hook			R	M05253
			L	M05252

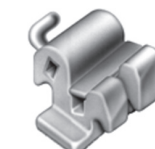


Markings - Right: Red, Left: Yellow

Mandibular tubes

.018 Arch Slot

Angulation	Torque	Distal Offset	Width	Right/Left	On Bases	Tubes Only/ On Bands
First Molar						
Single convertible tube/bracket with hook						
-5°	-24°	12°	3.8mm	R	A08378	A04978
				L	A08379	A04979
Single with hook without cap						
-5°	-24°	12°	3.8mm	R	A08368	A04968
Preangulated. Torque in base.						
				L	A08369	A04969
First Molar						
Double convertible with hook						
-5°	-24°	12°	3.8mm	R	A08364	A04964
Preangulated. Torque in base.						
				L	A08365	A04965
First Molar						
Double convertible with hook						
-5°	-24°	12°	3.8mm	R	A08386	A04986
Auxiliary tube: 0° angulation, 0° torque, 0° DO						
Preangulated. Torque in base.						
				L	A08387	A04987
Second Molar						
Single with hook						
-5°	-34°	6°	3.3mm	R	A08390	A04990
Preangulated.						
				L	A08391	A04991



*For more optional Bioprogressive® tubes, please refer to the Bioprogressive tubes catalog section.

KITS

Single Case, 20 Brackets

- KM05200** Original Bioprogressive® FLI® Twin .018 without hook, 5-5
- KM05201** Original Bioprogressive® FLI® Twin .018 hook on cuspid, 5-5
- KM05202** Original Bioprogressive® FLI® Twin .018 hook on cuspid/bicuspid, 5-5

BRACKET & TUBE SYSTEMS